

House & land package

\$423,417

Based on house \$249,417 and land \$174,000 as at 10/08/2015

Valid until 30th September 2015

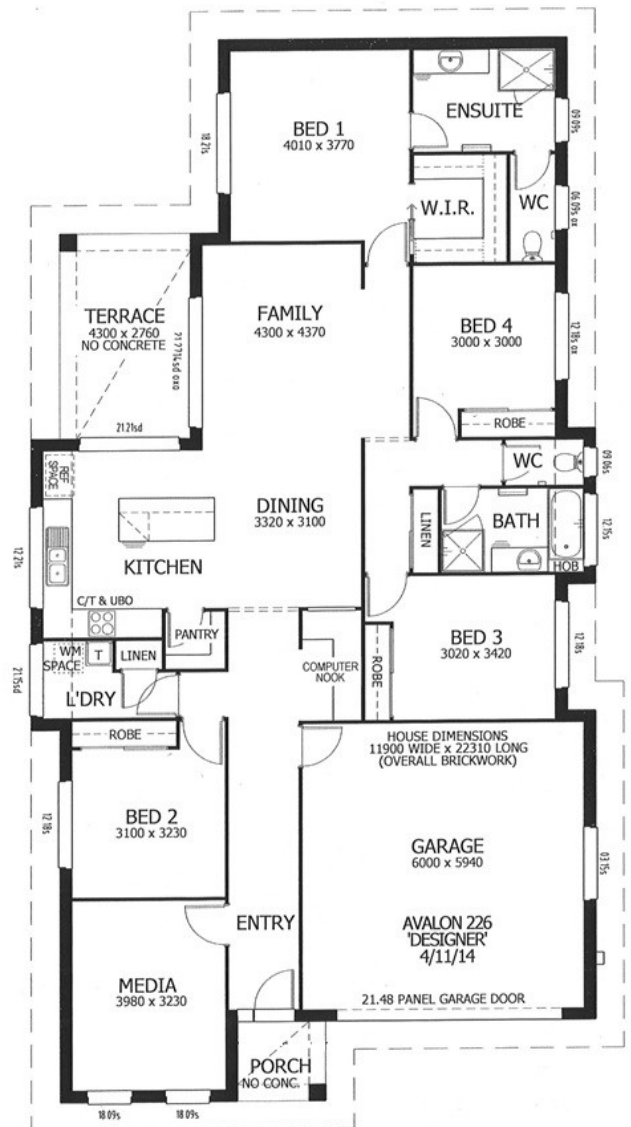


Design: Avalon 226 Lot 2 Gullane Close, Averys Rise Estate, Kurri Kurri, NSW

Floor Area: 226m² or 24.33sq Block Size: 570m²

Package includes:

- Façade - Prestige.
- Allowance of \$15,000 for site works and connection to standard power and water services.
- Heavy duty carpet and main floor tiles throughout.
- Westinghouse stainless steel appliances including slide-out range hood, ceramic cooktop and fan-forced oven.
- Overhead cupboards, wall oven tower and dishwasher provision.
- Downlight fittings and LED light switches throughout.
- Remote control to garage door.
- Fly screens to all windows and sliding doors.
- Vertical blinds through out (Excluding garage)
- Exposed aggregate concrete to driveway, porch, terrace and clothesline pad.
- Wall mounted clothesline.
- Powder coated letterbox.
- TV antenna including booster.



For more details contact the sales consultant

Noel Simmonds 0418 169 800

noel.simmonds@perryhomes.com.au

Disclaimer

Due care has been taken with the siting, design and pricing of the proposed dwelling based upon current information and is correct at time of publication. This however, may change as a result of other influences such as; developer covenants, local, state or federal government requirements etc. Also, undetermined site conditions such as; tree removal, acoustics, bushfire, rock etc. may be excluded unless otherwise specified. Terms and conditions apply to campaigns and special offers. Plans and images are for illustrative purposes only and may not accurately depict the finished product. Some images may include products which are not supplied by Perry Homes and are used for display purposes only. Perry Homes (Aust) Pty Ltd. QBCC Act Lic. No.178748 NSW Lic No. 110970C