

# HOUSE AND LAND PACKAGE

**IN AVERYS RISE, HEDDON GRETA**

(Land Size: 576m<sup>2</sup>)

# \$465,939

## PROTEA 21

Hamilton Facade

195.69m<sup>2</sup>

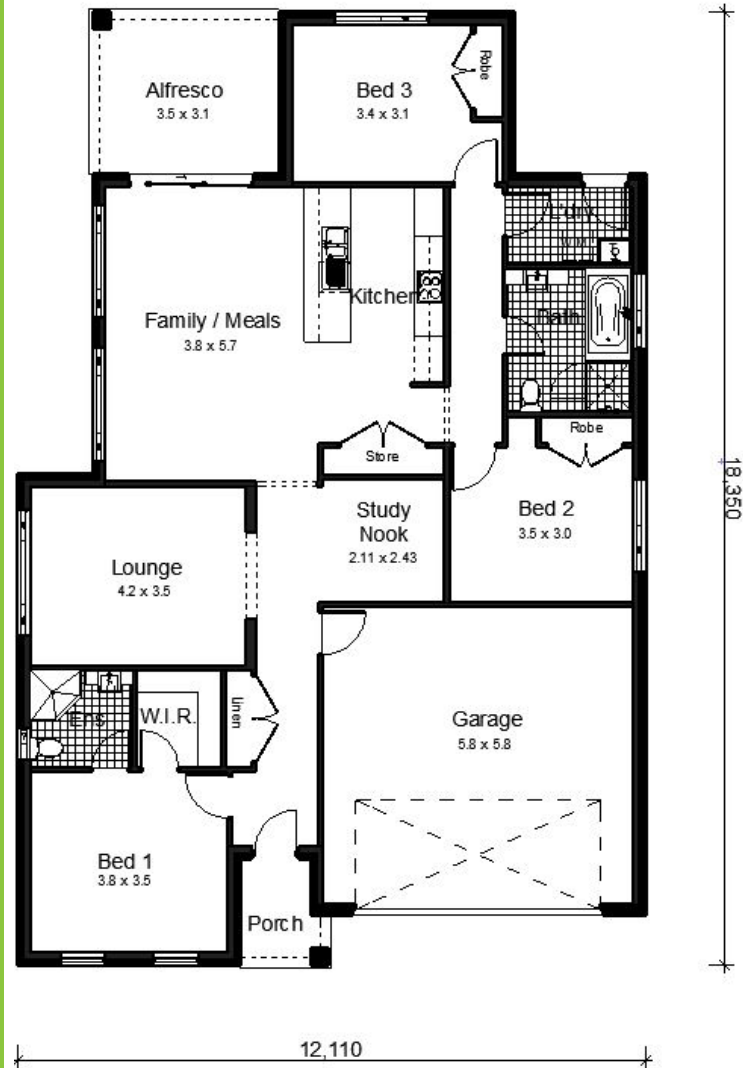


# HOUSE AND LAND PACKAGE

LOT 31 NAIRN AVENUE, HEDDON GRETA

## PACKAGE INCLUDES:

- Provisional Site Costs & BASIX
- Provisional Design & Planning Costs
- Steel Frame & Trusses
- Termimesh Pest Control
- Colorbond Roof
- Flyscreens to all Windows
- Flydoors to All Sliding Doors
- Inline Water Filter
- Alfresco with Concrete Slab
- Overhead Cupboards
- Automatic Garage Door
- Personal Colour Consultation
- Actron Ducted Air Conditioning
- 900mm Westinghouse Appliances-  
*Cooktop, Oven, Rangehood*
- Dishlex Dishwasher
- Caesarstone Benchtops with Waterfall  
Ends to Island (20mm)
- Floor Coverings (Carpet & Tiles)
- Concrete Driveway
- **Plus many more quality inclusions!**



\*Heron Facade floorplan shown- slight differences depending on facade

## CONTACT:

**Jackie Barton** - Sales Consultant (Harvest Boulevard, Chisholm)

Phone: (02) 4046 9832 Mobile: 0419 417 755

Email: [jackie@bartletthomes.com.au](mailto:jackie@bartletthomes.com.au)

Web: [www.bartletthomes.com.au](http://www.bartletthomes.com.au)

