

HOUSE AND LAND PACKAGE

IN AVERYS RISE, HEDDON GRETA

(Land Size: 576m²)

\$496,359

WATTLEBIRD 25

Daydream Facade

237.60m²

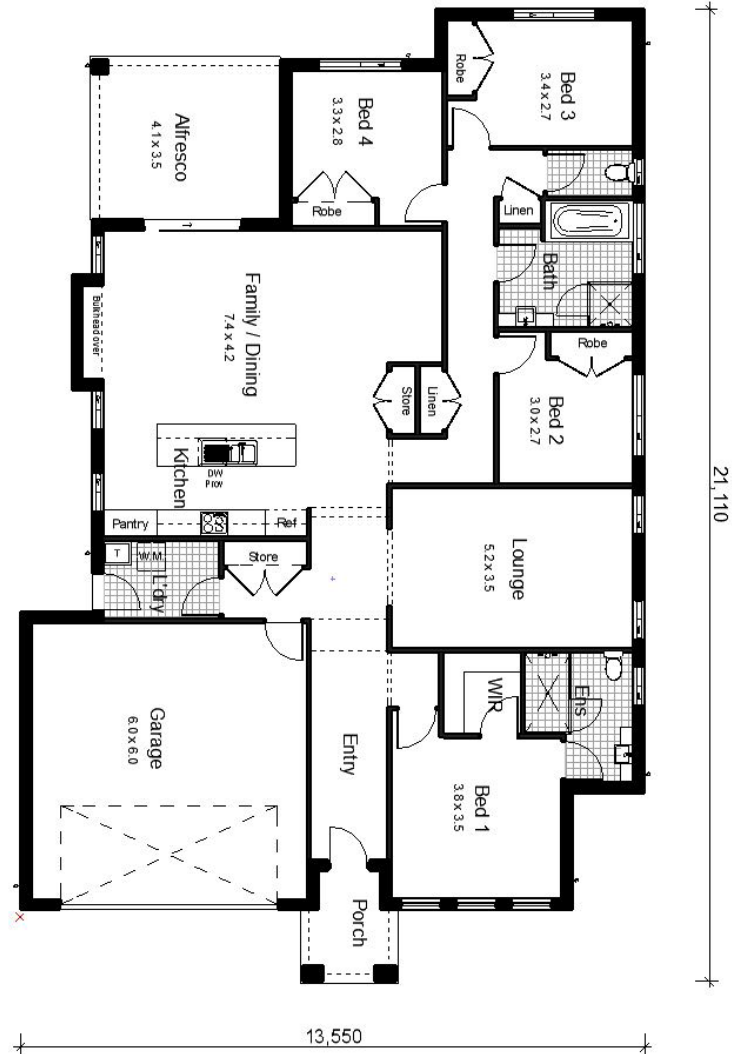


HOUSE AND LAND PACKAGE

LOT 33 NAIRN AVENUE, HEDDON GRETA

PACKAGE INCLUDES:

- Provisional Site Costs & BASIX
- Provisional Design & Planning Costs
- Steel Frame & Trusses
- Termimesh Pest Control
- Colorbond Roof
- Flyscreens to all Windows
- Flydoors to All Sliding Doors
- Inline Water Filter
- Alfresco with Concrete Slab
- Overhead Cupboards
- Automatic Garage Door
- Personal Colour Consultation
- Actron Ducted Air Conditioning
- 900mm Westinghouse Appliances-
Cooktop, Oven, Rangehood
- Dishlex Dishwasher
- Caesarstone Benchtops with Waterfall
Ends to Island (20mm)
- Floor Coverings (Carpet & Tiles)
- Concrete Driveway
- **Plus many more quality inclusions!**



*Heron Facade floorplan shown- slight differences depending on facade

CONTACT:

Jackie Barton - Sales Consultant (Harvest Boulevard, Chisholm)

Phone: (02) 4046 9832 Mobile: 0419 417 755

Email: jackie@bartletthomes.com.au

Web: www.bartletthomes.com.au

