

HOME PACKAGE

AVAILABLE ON YOUR OWN LAND

Or we can find the land for you

\$300,088

SANDPIPER 24

Bedarra Facade

224.65m²



4

BEDROOMS

2

BATHROOMS

2

LIVING

2

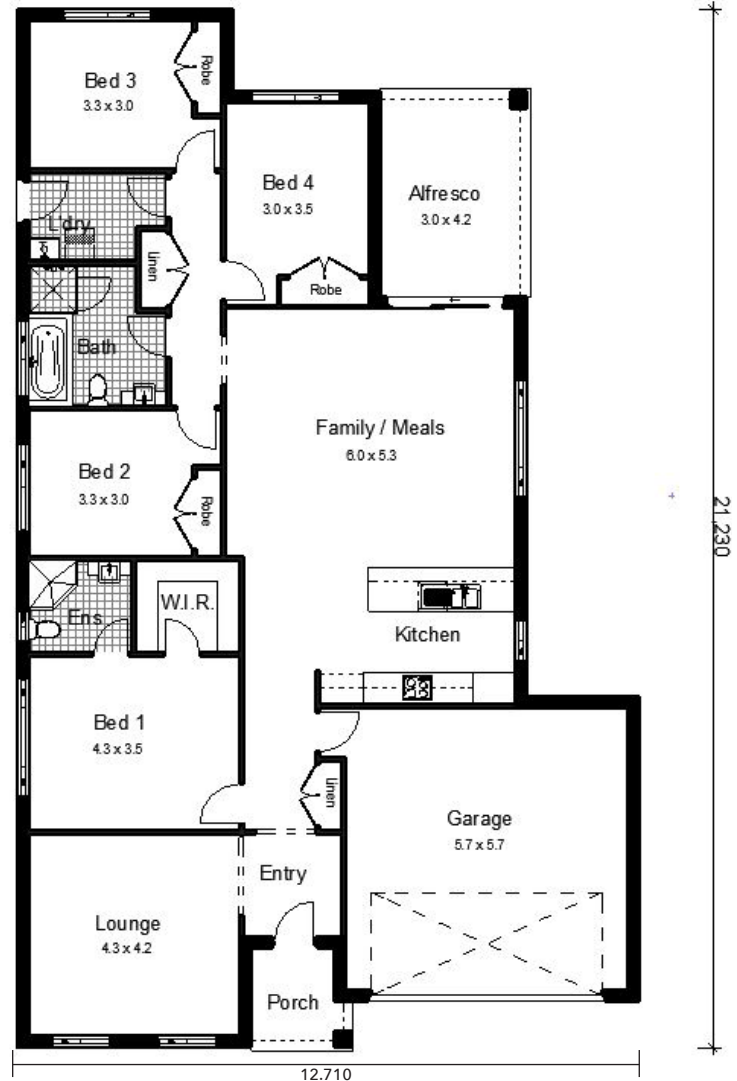
GARAGE

HOME PACKAGE

AVAILABLE ON YOUR OWN LAND

PACKAGE INCLUDES:

- Provisional Site Costs, BASIX, and Council Costs
- Truecore Steel Frame & Trusses
- Termimesh Pest Control
- Colorbond Roof with Anticon Blanket
- Flyscreens to all Windows
- Flydoors to All Sliding Doors
- Actron Ducted Air Conditioning
- 900mm Westinghouse Appliances-
Cooktop, Oven, Rangehood, Microwave
- Stainless Steel Dishlex Dishwasher
- 20mm Caesarstone Benchtops to
Kitchen with Waterfall Ends to Island
- Floor Coverings (Carpet & Tiles)
- Concrete Driveway
- Hume 1200mm Stained Entrance Door
- Alfresco with Concrete Slab
- Overhead Cupboards with Sheen Finish
- Automatic Sectional Panelift Colorbond
Garage Door with 2 Remotes
- Personal Colour Consultation
- PGH Certified Brick Cleaning
- **Plus many more quality inclusions!**



House too big or small?

Don't like the facade?

We can change these things to suit your needs. Contact us today.

CONTACT:

Jackie Barton - Sales Consultant (Harvest Boulevard, Chisholm)

Phone: (02) 4046 9832 Mobile: 0419 417 755

Email: jackie@bartletthomes.com.au

Web: www.bartletthomes.com.au

